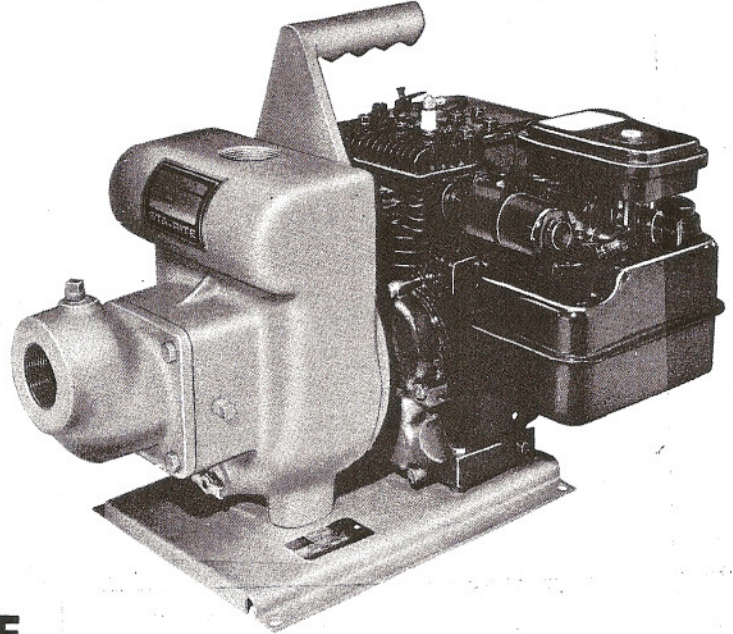


GULF SOUTH SUPPLY INC
 7721 AIRLINE DRIVE
 HOUSTON, TEXAS 77037
 PHONE 281-445-8077
 GSS-77
 1100
 FAX 281-445-8557

"ED" SERIES ENGINE DRIVEN CENTRIFUGAL PUMPS

"ED" Series Centrifugal Pumps are designed for most portable liquid transfer applications. Available in rugged cast iron . . . powered by dependable gasoline engines.

"ED" Series pumps are self-priming . . . lightweight and compact for portability—handy carrying handle is built-in.



BRIGGS & STRATTON ENGINE

SELF PRIMING---NO NEED TO REPRIME AFTER INITIAL PRIMING.
 BUILT IN FLAPPER TYPE CHECK VALVE

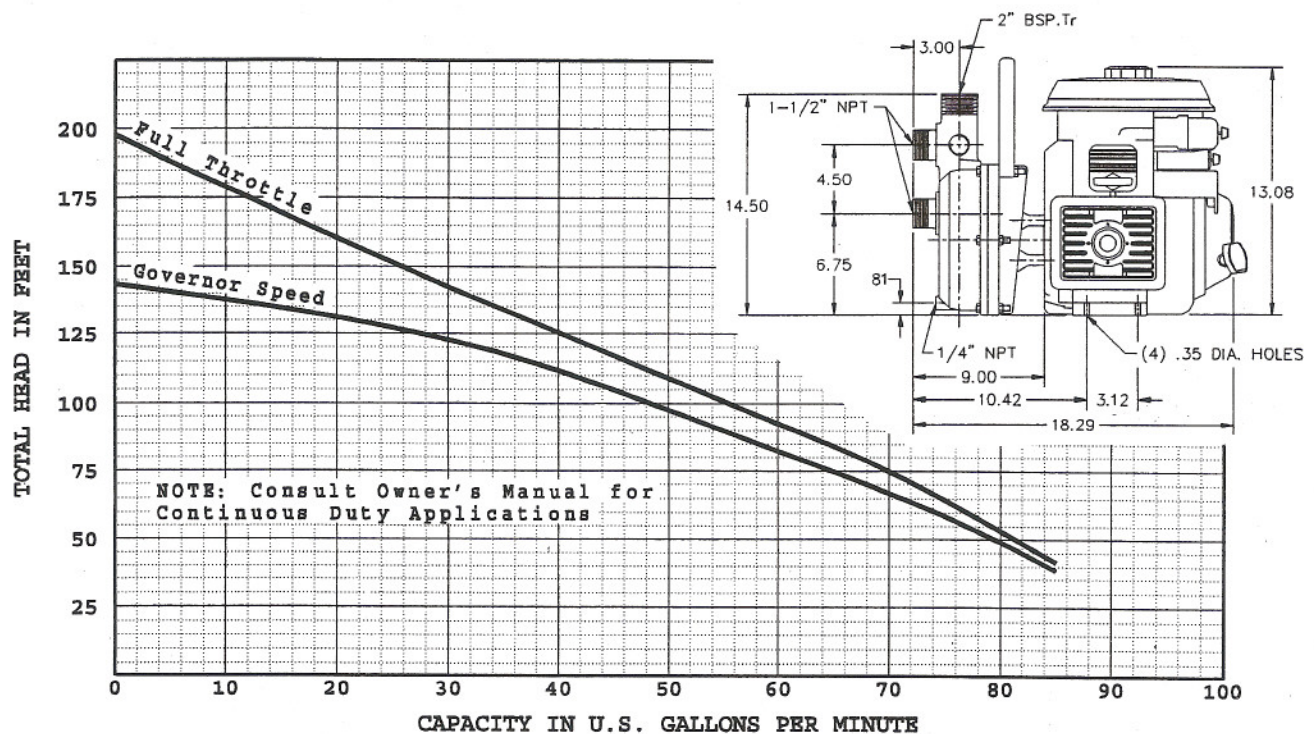
COMPACT DESIGN---OVERALL APPROX. 20" LONG, 15" WIDE, 16" HIGH
 CAST IRON HOUSING AND BRIGGS & STRATTON ENGINE
 CAST IRON SEMI-OPEN IMPELLER

	<u>DISCHARGE HEAD (SHOWN IN PSI)</u>			
	<u>13 PSI</u>	<u>17 PSI</u>	<u>26 PSI</u>	<u>30PSI</u>
<u>DYNAMIC</u>				
<u>SUCTION</u>	5'-----134 GPM---	120 GPM----	83 GPM----	54 GPM
<u>LIFT</u>	10'-----127 GPM---	112 GPM----	70 GPM----	37 GPM
<u>(FEET)</u>	15'-----120 GPM---	104 GPM----	54 GPM----	17 GPM
	20'-----112 GPM---	95 GPM----	37 GPM----	

<u>MODEL</u>	<u>HP</u>	<u>FUEL</u> <u>TANK SIZE</u>	<u>SUCTION AND</u> <u>DISCHARGE SIZE</u>
EDH-----	3-----	3 QUART-----	2 INCH-----

3 HP GASOLINE DRIVEN ENGINE PUMP
 PRICE INCLUDES PKG.53 MOUNTED ON FRONT TO GIVE THREADS

GASOLINE DRIVEN CENTRIFUGAL PUMP SERIES 350 — SELF PRIMING DESIGN 4.5 HORSEPOWER



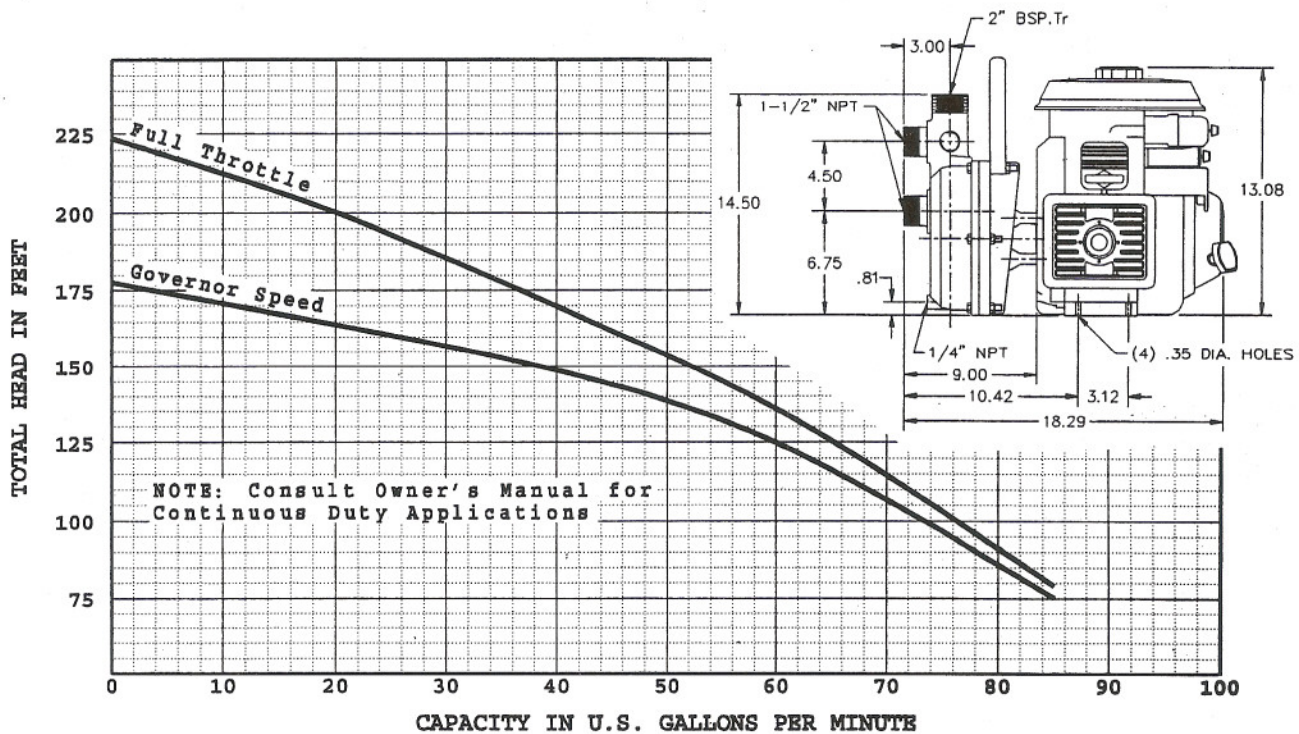
MODEL 350 SERIES—4.5 HORSEPOWER
CAST ALUMINUM PUMP HOUSING, DIFFUSER, & IMPELLER
MAX. LIQUID TEMPERATURE = 170 F
MAX. DIAMETER SOLIDS = .41 INCHES
1 1/2" SUCTION—FUEL TANK CAPACITY IS 2 QUARTS
ROBIN ENGINE—REWIND START
ROLL CAGE STYLE
UNIT WEIGHT APPROX = 65 LBS.

CATALOG NUMBER B71901.....

GULF SOUTH SUPPLY INC.
7721 AIRLINE DR.
HOUSTON, TEXAS 77037
PHONE: 281-445-8077 FAX: 281-445-8557

GSS-135
0106

GASOLINE DRIVEN CENTRIFUGAL PUMP SERIES 550 — SELF PRIMING DESIGN 6 HORSEPOWER



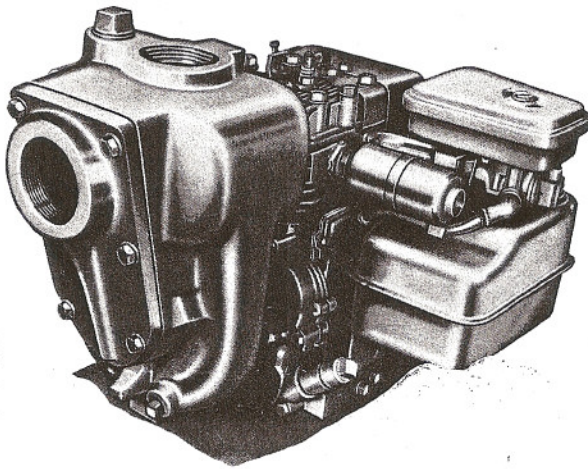
MODEL 550 SERIES-----6 HORSEPOWER
CAST ALUMINUM PUMP HOUSING, DIFFUSER, & IMPELLER
MAX. LIQUID TEMPERATURE = 170 F
MAX. DIAMETER SOLIDS = .31 INCHES
1 1/2" SUCTION-----FUEL TANK CAPACITY IS 2 QUARTS
ROBIN ENGINE-----REWIND START
ROLL CAGE STYLE
UNIT WEIGHT APPROX = 85 LBS.

CATALOG NUMBER B71904.....

Type "B" centrifugal pumps

Engine drive, self priming

- *Fast Priming*
- *Rugged Construction*
- *Dependable Performance*

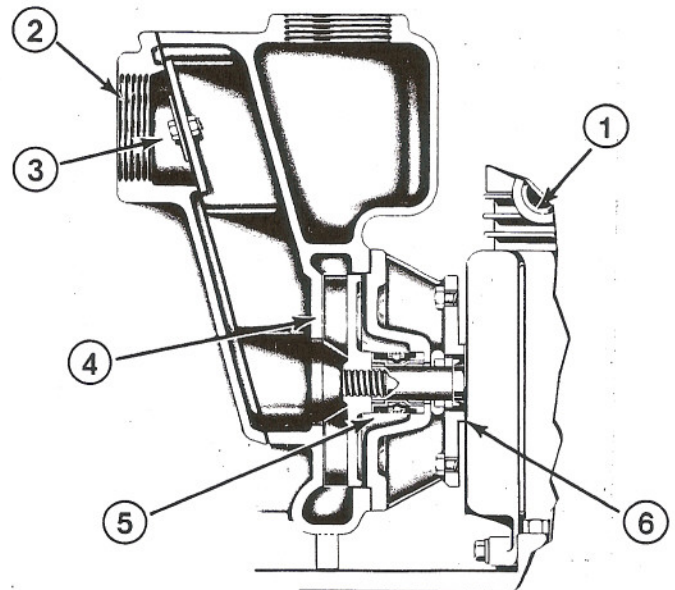


FEATURES

- 1 ENGINES**
Four stroke cycle air cooled, gasoline engines.
- 2 SUCTION**
Intake placed high for improved priming.
- 3 CHECK VALVE**
Rapid action valve eliminates back flow, retains prime in suction line. External check valve not required.
- 4 IMPELLER**
Semi-open design, accurately balanced. Will pass small solids.
- 5 MECHANICAL SHAFT SEAL**
High quality with corrosion resistant metal parts.
- 6 LIP SEAL**
Additional seal protection for engine in event of damage to mechanical seal.

APPLICATIONS

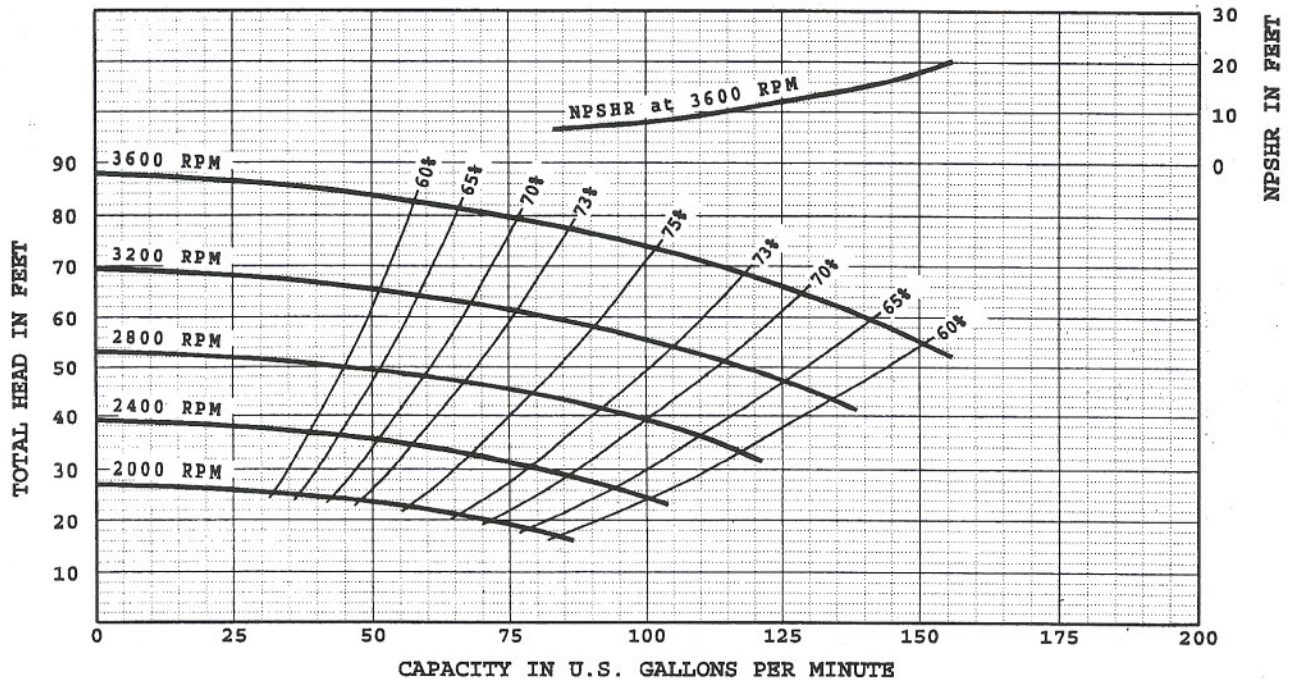
- Transfer pumps for filling vats, tanks, spraying rigs.
- All iron construction ideal for use with emulsion base pesticides and weed killers.
- Stand-by fire protection for marinas, vacation and residential properties.
- High suction lift of 25 feet permits installation as remote sump pump.
- De-watering pumps for draining excavations, ditches and flooded basements.
- Irrigation pumps for lawns and gardens and moderate size farms.



GULF SOUTH SUPPLY INC.
7721 AIRLINE DR.
HOUSTON, TEXAS 77037
PHONE: 281-445-8077 FAX: 281-445-8557

GSS-403
0106

**TYPE "B" GASOLINE DRIVEN
CENTRIFUGAL PUMP
MODEL B2XQKHS-6 -- SELF PRIMING DESIGN
6 HORSEPOWER**



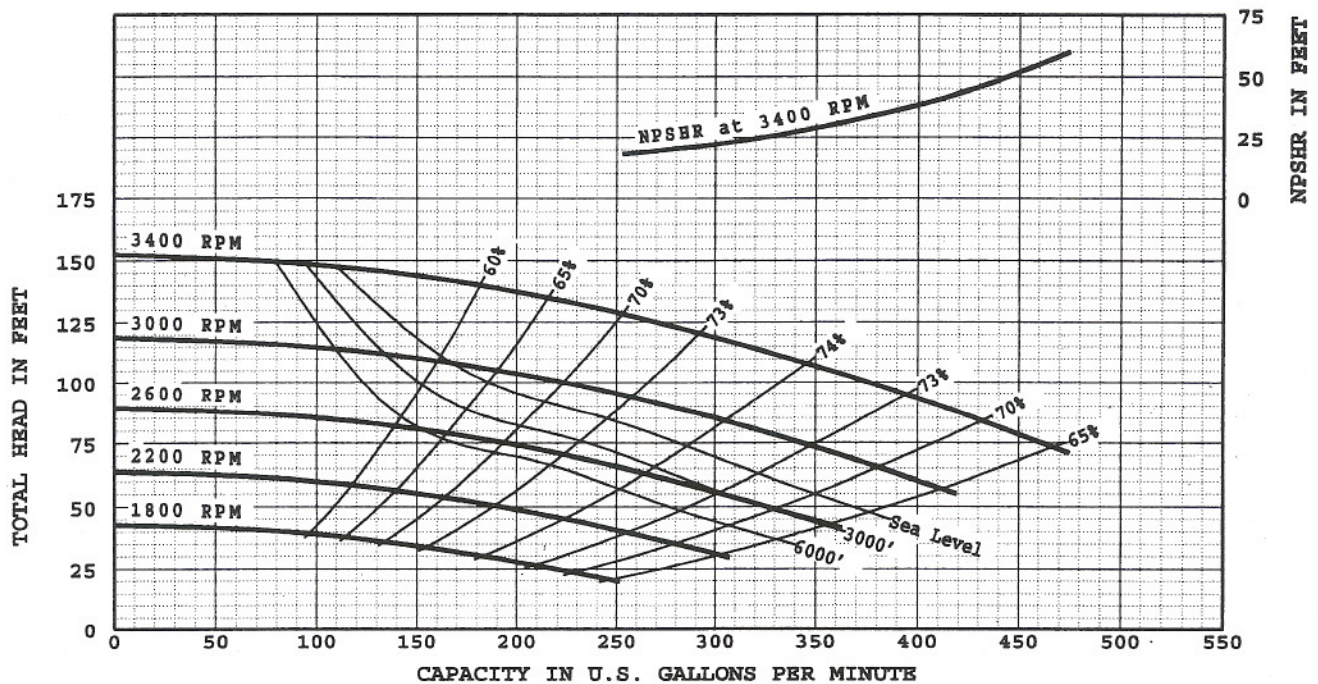
MODEL B2XQKHS-6 6 HORSEPOWER
CAST IRON PUMP HOUSING, IMPELLER, & SEAL HOUSING
MAX. LIQUID TEMPERATURE = 170 F
MAX. DIAMETER SOLIDS = .56 INCHES
2" SUCTION & DISCHARGE ----- ROLL CAGE STYLE
ROBIN ENGINE ----- REWIND START
FUEL TANK CAPACITY = .95 GALLONS
UNIT WEIGHT APPROX. = 105 LBS.

CATALOG NUMBER -- B71908.....

GULF SOUTH SUPPLY INC.
7721 AIRLINE DR.
HOUSTON, TEXAS 77037
PHONE: 281-445-8077 FAX: 281-445-8557

GSS-404
0106

**TYPE "B" GASOLINE DRIVEN
CENTRIFUGAL PUMP
MODEL B3TQKLS-9 -- SELF PRIMING DESIGN
9 HORSEPOWER**



MODEL B3TQKLS-9 9 HORSEPOWER

CAST IRON PUMP HOUSING, IMPELLER, & SEAL HOUSING

MAX. LIQUID TEMPERATURE = 170 F

MAX. DIAMETER SOLIDS = .85 INCHES

3" SUCTION & DISCHARGE -----BASE MOUNTED STYLE

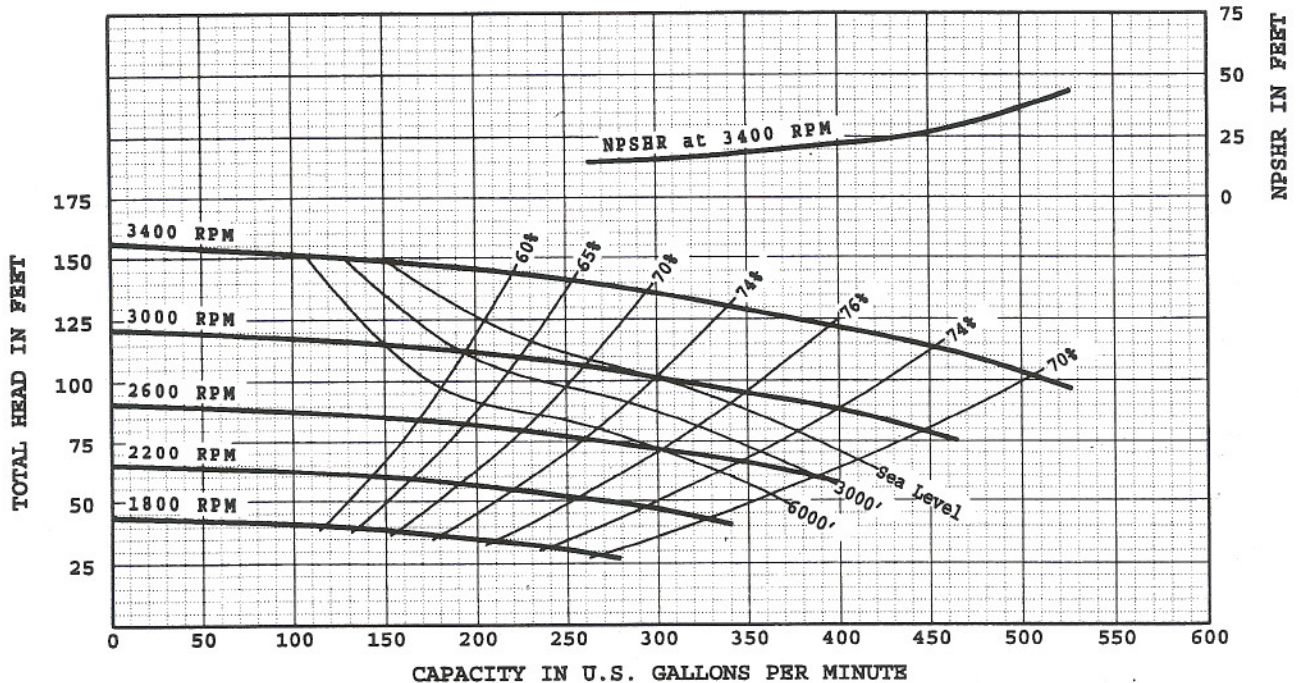
ROBIN ENGINE -----REWIND START

FUEL TANK CAPACITY = 1.59 GALLONS

UNIT WEIGHT APPROX. = 180 LBS.

CATALOG NUMBER -- B72139.....

**TYPE "B" GASOLINE DRIVEN
CENTRIFUGAL PUMP
MODEL B3TQKHS-13.5 --- SELF PRIMING DESIGN
13.5 HORSEPOWER**



MODEL B3TQKHS-13.5 13.5 HORSEPOWER

CAST IRON PUMP HOUSING, IMPELLER, & SEAL HOUSING

MAX. LIQUID TEMPERATURE = 170 F

MAX. DIAMETER SOLIDS = .85 INCHES

3" SUCTION & DISCHARGE -----BASE MOUNTED STYLE

ROBIN ENGINE -----ELECTRIC START

INCLUDES BATTERY & BATTERY CABLES

FUEL TANK CAPACITY = 1.85 GALLONS

UNIT WEIGHT APPROX. = 330 LBS.

CATALOG NUMBER -- B71534.....

Fire-fighting centrifugal pumps

Engine drive for mobile mounting

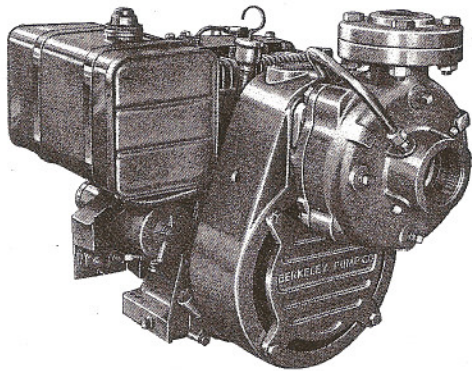
Berkeley fire fighting pumps incorporate a selected group of high-pressure, engine driven units with special design features and operating characteristics that are most desirable for mobile fire fighting equipment. All models produce high pressure-flow characteristics for stable operation. High discharge pressures provide for long hose lays, or steep up-hill pumping situations, with ample residual pressure at nozzle to generate the high velocities required for flat stream trajectory and effective penetration. The flow rate ranges accommodate the several truck size installations most commonly used in the field.

All models have excellent suction capabilities to permit overboard drafting. Both manual and powered priming systems are available. Corrosion resistant. Most wetting

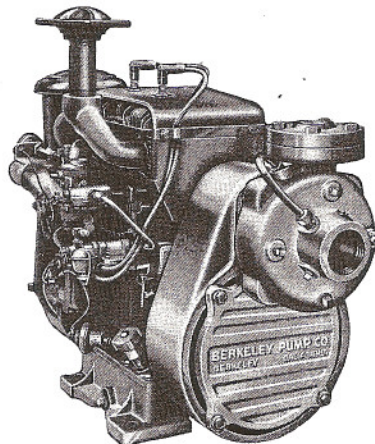
agents can be handled without problems. Pump assemblies are mounted directly to the engine to maximize rigidity and assure alignment of rotating parts. Pump operation is independent of vehicle movement.

Engines offered with Berkeley fire fighting pumps are air-cooled to provide minimum weight and space configuration required for truck mounting. All engines are open type, with 12 volt electric starters. Spark arresting mufflers, battery charging alternators and fuel tanks are available as accessory items on some models.

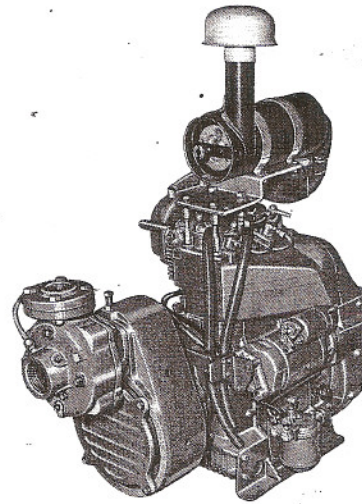
Discharge pressures to 300 PSI; Capacities to 230 gallons per minute.



Model B1½XQBS-11



Model B1½XQBS-18



Model B1½XQBS-21